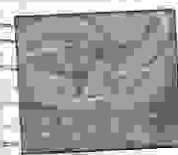




Missouri State Beekeepers Association  
52 Saline Valley Dr.  
Eldon Mo. 65026



July 2003

64138+3103 11



President: Chris Gibbons, 500 Starla Rd.  
Columbia, Mo. 65202 (573)-256-8687  
E-mail: [cgibbons5@tuno.com](mailto:cgibbons5@tuno.com)

Past President: Art Gelder, 6800 N. Kircher Rd.  
Columbia, Mo. 65202, (573)-474-8837  
E-mail: [Walkabot@midamerica.net](mailto:Walkabot@midamerica.net)

Vice President: Monte Richardson, 1405 S. Prospect Ave.  
Sedalia, Mo. 65301, (660)-826-4917  
E-mail: [mr-gr@swbell.net](mailto:mr-gr@swbell.net)

Secretary: Jann Amos, 776 Linnsmill Rd.  
Troy, Mo. 63379 (573)-528-7344  
E-mail: [amosaj@missouri.edu](mailto:amosaj@missouri.edu)

Treasurer: Ron Vivian, P.O. Box 448  
Oak Grove, Mo. 64075 (816)-690-7516  
E-mail: [rlvbrook@aol.com](mailto:rlvbrook@aol.com)

Program Chair: Teg Stokes, 320 Union Blvd.  
St Louis, Mo. 63108, (314)-367-8695  
E-mail:

Editor: John Sauls, 52 Saline Valley Dr.  
Eldon Mo. 65026 (573)-392-1777  
E-mail: [hahunlid@socket.net](mailto:hahunlid@socket.net)

Aux President: Joanne Davis 4618 Hwy Z  
Bates City, Mo. 64011, (816)-690-8007  
E-mail: [bellhill@planetk.com](mailto:bellhill@planetk.com)

Queen Chair: Vera Gelder, 6800 N. Kircher Rd.  
Columbia, Mo. (573)-474-8837  
E-mail: [Walkabot@midamerica.net](mailto:Walkabot@midamerica.net)

State Entomologist: Mike Brown, P.O. Box 630  
Jefferson City, Mo. 65102 (573)-751-5505  
E-mail Michael: [Brown@mail.mda.state.mo.us](mailto:Brown@mail.mda.state.mo.us)

Extention Specialist: Ray Nabors, 1612 hwy 162  
Portageville, Mo. 63873 (573)-379-5609  
E-mail: [Nabors@missouri.edu](mailto:Nabors@missouri.edu)

Asst Professor of Entomology: Dr. Richard Houseman  
1-87 Agricultural Bld., Columbia, Mo. 65211  
(573)-882-7181  
E-mail: [HousemanR@missouri.edu](mailto:HousemanR@missouri.edu)

Librarian: Pam Wright, 9492 County Rd. 9190  
West Plains, Mo. 65775 (417)-257-1770  
E-mail: [Wri@townsqr.com](mailto:Wri@townsqr.com)

Letter from the President:

Hello, everyone! I sure am glad to see the swarm season over. Here in Mid-Missouri, the rainy weather of May really seemed to slow things down. We had hives swarm that were split and supered. Although this happens a little every year, especially when using excluders, this year was more dramatic. Most of the honey supers put on earlier, were wall-to-wall brood with very little nectar. This can cause crowding, the same as a heavy, early nectar flow. I think I prefer the latter.

I would like to talk about our continuing membership crisis. I call it a crisis because membership has been steadily declining for a number of years. Could this be caused by stronger local associations creating a feeling that the State Association is no longer beneficial? Could it be that the meetings are no longer interesting? The camaraderie and competition no longer fun, or too much of a hassle? Someone asked me the other day what the MSBA offered to its members and I had to stop and think. Well, as a joke, I said, reduced subscription rates on national publications. But then I said, by being a larger, financially stable organization we are able to offer meetings and workshops with nationally known scientists and speakers.

**The MSBA works to get approval for the treatments we need to keep our bees alive. The MSBA lobbies for beekeepers interests at the Legislative Banquet and the Governors Conference on Agriculture. The MSBA has a Honey Queen and sponsors her to promote honey and bees. (Hannah is a beekeeper herself! Members need to utilize her knowledge and willingness to help more often).**

We have the biggest booth draw in the Agriculture Building at the State Fair. For those who have not been to the Fair in a few years, things have changed. Thousands of cups of honey ice cream are sold and kids can roll their own candles. The honey competition is in beautiful glass cases. Information is passed on to the public and volunteers work hard but have a lot of fun.

The MSBA also maintains a library with informative books and videos (Librarian: Pam Brown).

The best thing I get from the MSBA is the chance, a few days a year, to get together with friends, old and new, and have some fun. The sad part about writing this letter is that most of you who read this are current members. Previous members, who are delinquent in paying dues, are being removed from the mailing list. This includes delinquent advertisers. This organization cannot run on State Fair revenue alone. The Executive Board is working hard to better provide services for its members. We will be starting the web site soon and making the newsletter available via e-mail. We have a good bunch of people here, but we need help. If you know a previous member or possibly a potential new member, let them read your Newsletter or better yet, tell them why you are a member.

Thanks for your time.

Chris Gibbons

Pg#2

From Art Gelder State Fair coordinator

Well it's getting close again. I'm talking about the Missouri State Fair. There was an bid sheet in last issue of the news letter and I haven't received anything back yet. We need honey to sell at the fair so please send me a bid sheet with a sample of your honey, a small 6 oz. or less is all that's required. I also need volunteers to help in the booth for selling honey and ice-cream, making beeswax candles, showing the observation hive, and most important, educating and promoting honeybees and HONEY. Please call me at 573-474-8837 and let me know when you can help. Remember if you work 6 hours at the booth you get your pass for the fair paid for. If you work 2 days and need a place to stay we have a room available for you to stay for \$20.00 a night and the beekeepers will pick up the rest of the room tab. That is a great deal since the motels in the area charge \$100.00 per night during the fair. Lets have a great turnout for the fair so call early and get your name on the list. All spots are open, so first come first served.

One other item for the newsletter. We will not have the honey cookery in the side window like before that will be in the Home Economics building. What we need is for people to bring in any antique beekeeping equipment they have so we can display it in the window along with an explanation of what it is and what it was used for. Anyone who has an item for display they are to contact me. Thanks again.

Art Gelder  
State Fair Coordinator

Art and Vera Gelder  
Walk-About Acres

## Why do I belong to the Missouri State Beekeepers' Association?

Hello All,

As I write this I article I'm gloating over the full supers that I pulled today. The weather has just turned hot here and I'm wondering if the sweet clover will keep going or not. The dutch clover is looking dry and the yellow clover has finally gone for the year.

I am also thinking about all the different people that have bees in Missouri. The vast majority of beekeepers in Missouri are what are termed hobbyists. I have never really liked that term nor the term "side liner". Why? Because I feel that all responsible beekeepers believe in the same values whether they have one hive several hundred, or thousands. We all belief in putting out a quality product, being responsible members of the community, and educating the public about the benefits of bees, honey, and the myriad of by-products that bees and beekeeping produce.

Many times I have read in the bee journal about somebody that obviously doesn't have large numbers of colonies that has taken the time and trouble to discover something of benefit to the industry. It is the local beekeeper that has five or ten hives that is asked to speak at the local elementary school about bees. It's the sideliner at the local fair or special event that usually spends more of his/her time educating people than selling their honey.

Many fine beekeepers have fallen to the wayside in the last 20 years that I have been away from beekeeping. Why did those that survived make it? Why is it that one beekeeper will lose his bees one winter and another won't. Why did I have so much trouble with swarming this spring and the next guy didn't. I believe that the answer is, in part, in association, spending time with others of a common interest.

So Why Do I Belong To A State Association? Why should you? Why should every beekeeper in Missouri belong to the state association? This was demonstrated recently be an email from Mike Brown. He acknowledges that beekeeping is important to Missouri. He also acknowleges how important it is for the State Association to provide information to him about what is needed in the industry. A state association also acts as a pipeline to local associations and beekeepers. The State Association promotes local beekeeping at state wide venues such as the Missouri State Fair. With the clout of hundreds of beekeepers we can also draw lectures such as members of the bee labs and universities to provide cutting edge information about our industry. For example, are you looking for a

pesticide free solution to your mite problems? Would you like to know how to maximize the productivity of your queens?

When I returned to beekeeping one of the first things that I did was search for the State Association. I knew that they could steer me toward a local association where I could associate with beekeepers in my area. I also knew supporting a state association makes my local organization stronger. And a strong local organization that supports the state association makes the state organization more able to address the needs of beekeeping throughout the state. So that when a drug is available for mites, that our voice can be added to the others for approval. So that when I am setting the price for my honey I know what is the going rate throughout the state and can make an informed decision on what my market will bear. So that when I have a problem, or solution, to a problem experienced by others, that we can all share in the discovery and solution. Being able to say that I belong to a local and state association also strenghtens my credibility with others. When I talk to a local farmer about putting bees on his land, telling him that I belong to a state organization helps to overcome apprehension. When I sell my honey and people know that I belong to a state association, it lends an air of professionalism and marketability to my product. Just as I am a citizen and member of my local community, I am also a citizen and member of the beekeeping community.

Also

We are planning for a convertible for Hannah The Honey Queen at the Missouri State Fair Parade on opening day. I'm pretty sure that we can get a convertible from the local car dealer but would much rather have a classic car or convetible from a beekeeper. If anybody is willing they should get in touch with me, Monte Richardson, 660-826-4917, mr-gr@swbell.net as soon as possible. We could also use a few people to help pass out honey candy during the parade. If somebody has a "beekeeping" costume that would be good too.

Questions? Comments? Give me a buzz.

Monte

## ANNOUNCEMENTS

New Heartland Regional Beekeepers group will hold their second meeting July 10 – 12, 2003 in Midway, Kentucky.

NAP sign-up date for 2004 is Monday, December 1, 2003. NAP (Noninsured Crop Disaster Assistance Program).

MSBA is looking for someone to promote the state organization, their local organization, Honey and Bees at Empire State Fair in Springfield. Someone has already requested National Honey Board information, which are provided free to state organizations. The person who requested it did not list name or organization. Contact Chris Gibbons, MSBA President.

### AMS Will Hold Honey Board Vote This Summer

The American Honey Producers Association (AHPA) has been successful in petitioning the U.S. Department of Agriculture's Agricultural Marketing Service (AMS) to call a special continuation referendum on the National Honey Board (NHB). The vote will be held later this summer.

For the Honey Board to continue to operate, the order must be supported in a referendum by a majority of the voters who represent 50% or more of the honey or honey products represented by the voters in the referendum.

If the vote goes against the Honey Board, the Secretary of Agriculture would set procedures into motion to close down NHB activities and dispose of the assets. If the NHB is continued, two years must pass before the petition process can call another referendum. For more information, contact Kathie M. Birdsell, AMS Fruit and Vegetable Programs, USDA Stop 0244, 1400 Independence Avenue SW, Washington, DC 20250-0244; telephone 888-720-9917 and fax 202-205-2800.

(ABF supports NHB)  
(AHPA does not support NHB)

**Missouri State Fair Bid Sheet**  
**To be returned to Art Gelder by June 25<sup>th</sup>, 2002**

You may bid on one or as many items as desired. It's the winning bidders responsibility to have items at and picked up at the fair ground day and time specified by the on site manager. All winning bidders agree to take back any unsold items and present the treasurer a bill within 15 days of close of fair. All honey must be produced in the State of Missouri, and all bidders must be members of MSBA. Committee reserves the right to reject any and all bids or products.

<u>Item</u>	<u>Quantity Needed</u>	<u>Your Price each</u>
<b><u>Extracted Honey</u></b>		
Gallon		
½ gallon		
4lb jars		
Quart Jars		
2lb jars		
1lb jars		
24 oz. jars		
12 oz. jars		
<b><u>Chunk</u></b>		
Size		
<b><u>Niblet</u></b>		
Size		
<b><u>Comb</u></b>		
Cut comb		
Ross Rounds		
<b><u>Creamed</u></b>		
Plain		
Flavored		
Fruit		
<b><u>Honey Sticks</u></b> - assorted flavors		
<b><u>Beeswax</u></b>		
Candles		
Rolled		
Dipped		
Molded		
Novelty		
1 lb blocks		
2lb blocks		
Candle rolling sheets -assorted colors		
Soap containing honey & or beeswax		
Wicking for rolled candles		
<b><u>Pollen</u></b>		
8oz. Jar		
1lb. Jar		
<b><u>Hard Candy</u></b> - assorted flavors		
<b><u>Dippers</u></b>		
<b><u>Honey Pots</u></b> -list styles		
<b><u>Clothing</u></b> - describe		

\_\_\_\_\_

\_\_\_\_\_

\_\_\_\_\_

**Flags**

**Stationary-** describe

\_\_\_\_\_

\_\_\_\_\_

**Jewelry-** Describe

\_\_\_\_\_

\_\_\_\_\_

\_\_\_\_\_

**Books**

- "Beekeeping in the Midwest"
  - "How to Keep Bees and Sell Honey"
  - "Making Mead"
  - "A Year in the Life of an Apiary"
  - "Bee Pollen Miracle Food"
  - "Honey Bee Diseases & Pests"
  - Other \_\_\_\_\_
- \_\_\_\_\_
- \_\_\_\_\_

**Videos**

\_\_\_\_\_

\_\_\_\_\_

**Stuffed Animals**

\_\_\_\_\_

\_\_\_\_\_

**Other Items**

\_\_\_\_\_

\_\_\_\_\_

\_\_\_\_\_

\_\_\_\_\_

**Name:** \_\_\_\_\_

**Telephone:** \_\_\_\_\_

**Address:** \_\_\_\_\_

**E-Mail :** \_\_\_\_\_



# Humble Abodes Inc. Manufactures of Quality Apiary Woodware

RR1- Box 570 coopers Mill Rd.  
Windsor, ME 04363

Fax ( 207) 549- 5512 Ph ( 207 )- 549- 5501  
Call toll free 1 ( 877 )- 423- 3269

## Draper Super Bee

914 S Street

Aubun , NE 68305

Beekeeping Supplies , Bees ,Queens  
Honey, Pollen.

We deliver free to State meetings  
call for a free catalog  
( 402 ) - 274 - 3725

## Femme Osage Apiary

Ian & Pam Brown  
Certified Master Beekeepers

1407 Sneak Rd.  
Foeistell, Mo 63348-2102  
(636) 398- 5014  
lbrown@mail.win.org

Pollination,  
Hive Rental,-Bees  
Beekeeping Equipment  
Honey Products,-Candles

### For Sale:

4 Frame Nucs- Caucasian Queen  
\$42.50 w/Frame exchange\*\*\*  
\$48.00 w/o Frame exchange  
Will be ready approximately May 02  
Ian Brown (636)-398-5014

E-Mail lbrown@mail.win.org

\*\*Light comb or constructed frames w/foundation  
in place- No Dark comb will be accepted

### Take a walk-about at Walk-About Acres

6800 N. Kircher Road  
Columbia, MO. 65202  
Ph. (573) 474-8837

We carry beekeeping supplies, Beehive Botanicals  
gift items and bedding plants.



## Jester Bee Co.

P.O. Box 87/5099 Hwy 297  
West Ridge, AR 72391  
Visa, MC, AmEx accepted

Email: jesterbee@eritter.net

Website: www.jesterbee.com

For Orders Only (800) 294-2373

We use Russian, SMR, and Minnesota  
Hygienic Italian Breeder Queens from Glenn  
Apiaries in Fallbrook, CA. For more infor-  
mation on these bees, look at their website at  
<http://members.aol.com/queenb95>.

**3 lb. Pkg. Bees With Queen**

1-9 \$52 each + postage

10-up \$47 each + postage

**Queens**

1-10 \$15.00 each + postage

10-up \$12.00 each + postage

Queen cells \$2.50 each

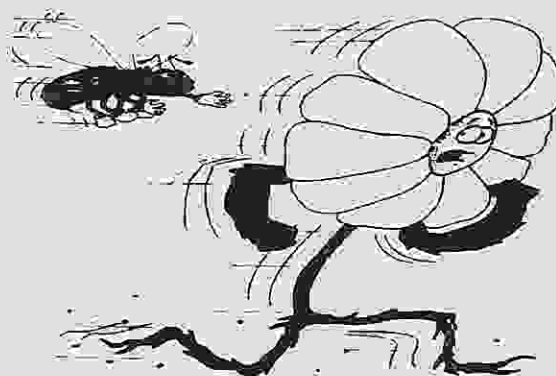
MARKING OR CLIPPING queens \$1.50 ea.

**4-Frame nuc w/queen \$75 each**

Single Story Hives \$100 each

(Picked up at West Ridge)

Orders for delivery before April 15th, add 25%  
to above prices. Orders for delivery after May  
15th, deduct 20% from above prices. All prices  
subject to change with availability and honey



Pg # 9

# Missouri State Beekeepers Membership Application

Name \_\_\_\_\_

Spouses name \_\_\_\_\_

Address \_\_\_\_\_

City \_\_\_\_\_ State \_\_\_\_\_ Zip code \_\_\_\_\_

Phone (\_\_\_\_) \_\_\_\_\_

E-mail address \_\_\_\_\_

**\*\*\* If you are a member of a local club please include your state membership dues in your check to your local club\*\*\*\*\***

Membership one adult = \$10.00 Family Membership = \$15.00 ( includes spouses membership in auxiliary)

Youth Membership = \$5.00 (non voting)

**\*\*\* If you are a member of a local club please purchase your subscription through your local club\*\*\***

## **American Bee Journal**

( ) Renew , attach label from current magazine  
or write the code number from your membership label

1 yr. \$16.75 \_\_\_\_\_  
2 yr. \$31.60 \_\_\_\_\_

## **Bee Culture**

( ) Renew , attach label from current magazine  
or write the code number from your membership label

1 yr. \$17.15 \_\_\_\_\_  
2 yr. \$32.35 \_\_\_\_\_

## **The Speedy Bee**

( ) Renew , Attach label from current magazine  
or write the code number from your membership label

1 yr. \$13.60 \_\_\_\_\_  
2 yr. \$25.60 \_\_\_\_\_

**Total**

\$ \_\_\_\_\_

**Make Checks Payable to :**

**Missouri State Beekeepers Association  
P.O. Box 448 Oak Grove , Mo. 64075**

## Missouri Honey Production Decreases 37 Percent

Honey production in Missouri totaled 954 thousand pound from 18,000 honey producing colonies for 2002. This is down 37.4 percent from the 1.525 million pounds produced from 25,000 colonies the previous year. Yield per colony averaged 53 pounds in 2002, down 8 pounds from 2001. Stocks of honey on hand December 15, 2002 totaled 200,000 pounds compared with 381,000 pounds a year earlier. Missouri producers received an average price of 1.37 dollars per pounds in 2002, up 66 cents from 2001. The 2002 value of Missouri honey production was \$1,307,000 compared to \$1,083,000 a year earlier.

## United States Honey Production Down 8 Percent

Honey production in 2002 from producers with 5 or more colonies totaled 171 million pounds, down 8 percent from 2001. There were 2.52 million colonies producing honey in 2002, up 1 percent from 2001. Yield per colony averaged 67.8 pounds, down 8 percent from the 74.0 pounds in 2001. Colonies which produced honey in more than one State were counted in each State and yields per colony may therefore be understated. Colonies were not included if honey was not harvested. Producer honey stocks were 39.0 million pounds on December 15, 2002, down 40 percent from a year earlier. Stocks held by producers exclude stocks held under the commodity loan program.

## Honey Prices Record High

Honey prices increased to a record high during 2002 to 128.6 cents, up 83 percent from 70.4 cents in 2001. Prices are based on retail sales by producers and sales to private processors and cooperatives. State level honey prices reflect the portions of honey sold through retail, co-op and private channels. U.S. honey prices for each color class are derived by weighing quantities sold for each marketing channel at the U.S. level. Honey prices in 2002 were higher than the previous year for all color classes. Some 2001 crop honey was sold at the higher prices in 2002 which caused some revisions to the 2001 crop prices.

**Honey: Number of Colonies, Yield, Production, Stocks, Price, and Value by State and United States, 2002**

State	Honey Producing Colonies		Yield Per Colony		Production		Stocks Dec 15		Average Price per Pound		Value of Production	
	2001	2002	2001	2002	2001	2002	2001	2002	2001	2002	2001	2002
	-thous.-		-lbs.-		-thous.	Lbs.-			-cents-		-thous.-	
AR	58	55	98	88	5,684	4,840	1,876	1,065	65	124	3,695	6,002
FL	6	9	76	80	456	720	251	130	158	142	720	1,022
IA	33	33	51	70	1,683	2,310	875	901	15	137	1,262	3,165
MO	25	18	61	53	1,525	954	381	200	71	137	1,083	1,307

The Missouri Crop & Livestock Reporter (USPS 447-810) is issued 24 times a year, (three times in Apr., Jul. & Oct.; two times in Jan., Feb., May, Aug., Nov. & Dec. and one time in Mar., Jun. & Sept.) by the Missouri Agricultural Statistics Service, P.O. Box L, Columbia, MO 65205. Subscription fees \$10.00 per year except free to data contributors.

***Mid-Con carries it all:***



- **Powdered Freeze-Dried Fruits For  
Flavored Creamed Honey**
- **Glass & Plastic Jars For Liquid  
& Creamed Honey**
- **Tins & Lip Balm Tubes**
- **Plastic & Glass Containers  
For Lotions & Salves**
- **Gift & Candle Boxes**
- **Soap & Candle Making Supplies**
- **Beekeeping Supplies**

---

**Mid-Con 1465 N. Winchester Rd., Olathe KS 66061**  
**[www.mid-conagri.com](http://www.mid-conagri.com) or 800-547-1392**

**CHECKMITE+ SECTION 18 SURVEY FORM**

**For the control of Apistan Resistant Varroa Mites  
and Small Hive Beetles**

The following information is required from persons using CheckMite+ for controlling Apistan Resistant Varroa Mites and Small Hive Beetles in Missouri honeybee colonies.

Beekeeper's Name \_\_\_\_\_

Address \_\_\_\_\_ Telephone Number \_\_\_\_\_

\_\_\_\_\_ County \_\_\_\_\_

Location of Honeybee Colony \_\_\_\_\_

Date of Treatment \_\_\_\_\_

Number of Strips Used \_\_\_\_\_

Comments \_\_\_\_\_

\_\_\_\_\_

\_\_\_\_\_

---

**I HAVE READ THE EMERGENCY EXEMPTION LABELING AND LABEL AND I HAVE  
FOLLOWED ALL THE LABEL PROCEDURES, PRECAUTIONS AND DIRECTIONS.**

---

---

**Signature**

---

**Date**

**RETURN THIS FORM TO:**

**Michael Brown, State Entomologist**

**Bureau of Plant Pest Control**

---

From The Editor.

The library has been taken over by Pam Brown and we are looking into updating and inventorying the library. We'll keep you posted.

We are looking for someone interested in promoting bees and the state organization at the Empire State Fair in Springfield Mo.

Also the St. Louis area Family Farm Festival...

We are looking into a lobbyist to go to bat for us at the state capital. We really need to get all the local organizations involved as well. If we want improvements for us as Beekeepers for medications, planting sweet clover on roadsides, pesticides etc. ect..... We need a voice to speak for us.

We need help with the float at the State Fair. If you would be able to help then please contact Monte Richardson...

Don't forget to mark your calender for the fall meeting Oct. 24<sup>th</sup> and 25<sup>th</sup> our featured speaker is Diane Summatoro. We are staying at the Ramada Inn and the cost for the hotel is \$57..